

XINLAISEN

Xinlaisen Engineering Technology (Shanghai) Co., Ltd

欣莱森工程技术(上海)有限公司

Cooperation

One-stop

Professional

XinLaisen Engineering Technology
(Shanghai) Co., Ltd



CONTENTS

02

Engineering

03

Procurement

04

Construction

05

Technical Services

06

Commissioning

07

O & M

08

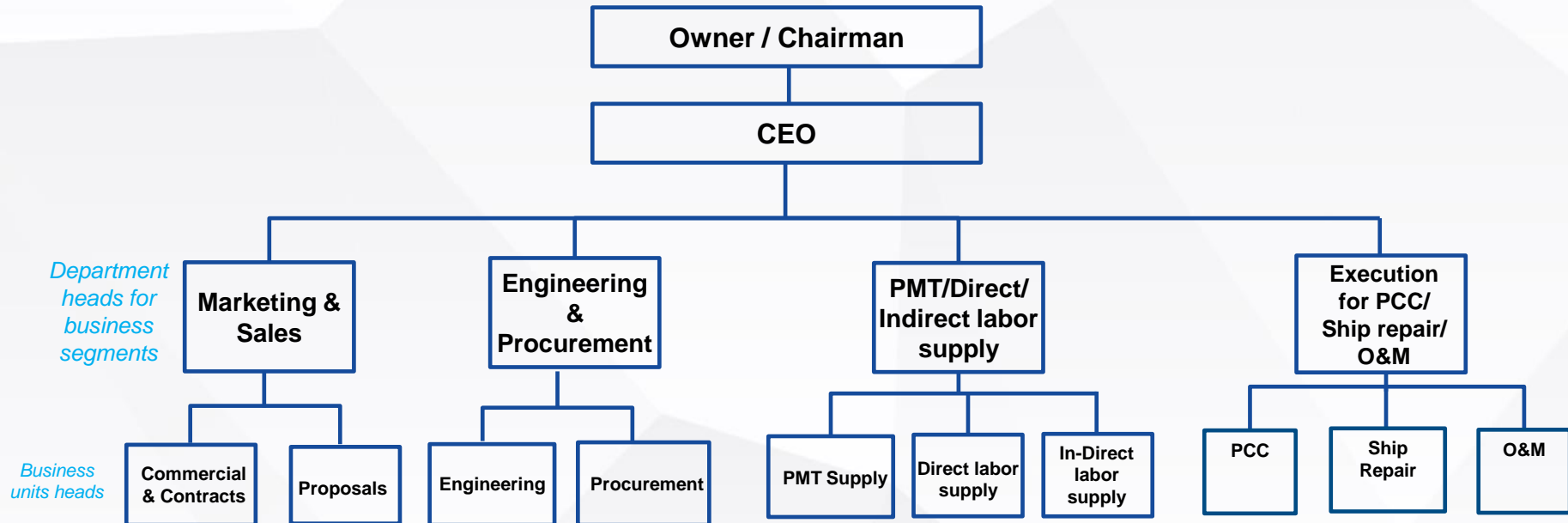
Fabrication Yards



ABOUT US



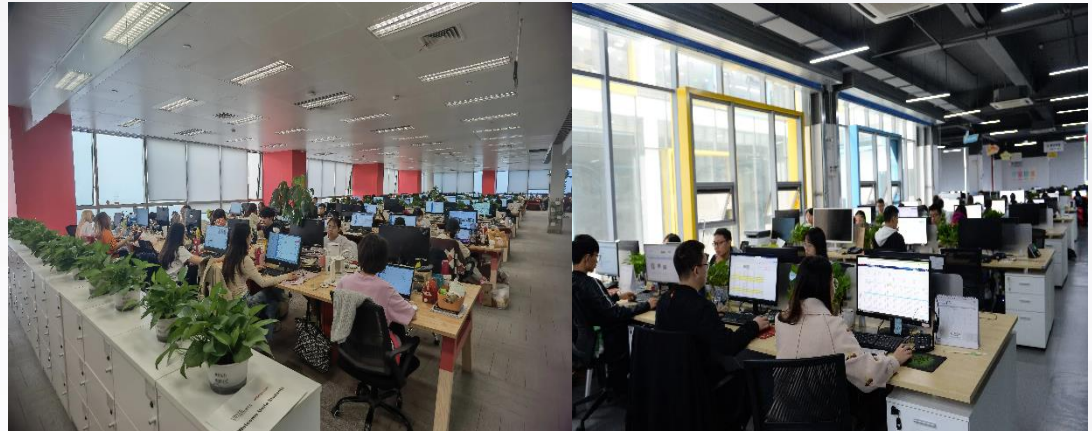
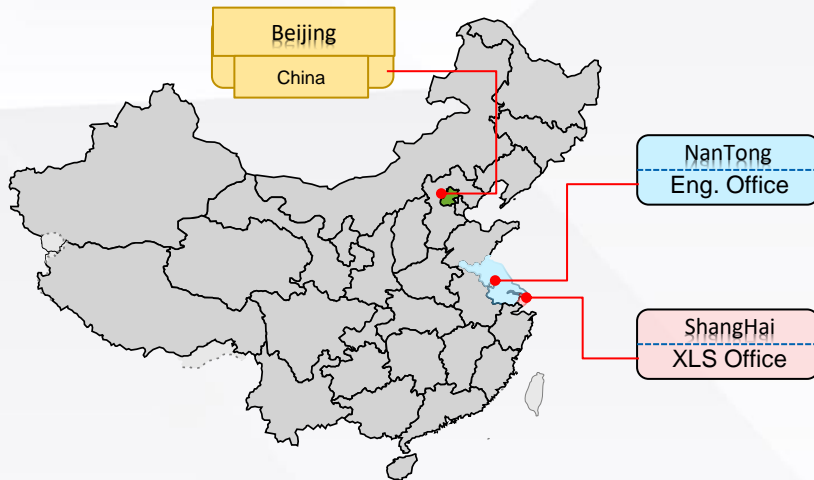
Organization



- ❖ Top management consists of international experienced personnel executing major international projects with over 20 years international project experience.
- ❖ Heads of business segments experienced in international projects working as various roles. CVs available when requested.



Corporate Introduction



- ❑ Headquartered in Shanghai, Xinlaisen specializes in EPCC services for offshore oil and gas equipment, construction, and commissioning.
- ❑ Global Presence: Xinlaisen China operates internationally through its affiliate, Masons Energies, in Singapore and Hong Kong.
- ❑ Our Services: Engineering, procurement, construction, commissioning, operations, and preservation, backed by strong project management expertise.
- ❑ Commitment to Excellence: We comply with all relevant regulations and industry standards to ensure safety, quality, schedule, and cost efficiency.





PMC

- Project tender
- Planning of tender
- Planning of execution
- Commercial support
- Assistance in negotiations
- Formalizing scope of work
- Technical evaluation
- Recommendation for order placement for all Services Contracts
- All post award activities

Engineering

- Basis of Design Development
- Pre-FEED/FEED
- Detailed Engineering Design
- EPCM Technical support
- 3D module development and review
- Interface and integration engineering
- Engineering site support
- Permitting and regulatory support
- Documentation and Reporting

Procurement

- Procurement management
- Safety materials supply
- Procurement engineering support
- Bulk material supply
- E&I material supply
- Machinery material supply
- Piping bulk and tagged material supply
- Factory Acceptance Test (FAT)
- Commissioning spares
- Documentation and Reporting

Construction

- Direct manpower supply which includes structure, piping, E&I and insulation
- Piping material prefabrication outside yard
- Skid construction
- Integration works
- Documentation and Reporting

Commissioning

- Pre-Commissioning Activities
- Commissioning Planning
- System Testing and Verification
- Documentation and Reporting
- Training and Handover
- Piping Galt and Mop
- Instrument loop check
- Lighting system
- EHT energization
- HVAC loop test
- Rotating equipment test
- Operations



Top Management

Company Top Management Commitment, Lead as an example, safety value

HSSE Procedures

Company Top Management Commitment, Lead as an example, safety value

Awareness

Site workforce with proactive attitude
Contribution to company safety value

Operational Concept

Support “safety first” value (from engineering, procurement, commercial, production, HR, Finance, subcontracting etc)

Behavior

Site workforce with “right” behavior



1



Become one of the leading providers for offshore EPC projects and companies

2



Integrity, dedication, pragmatism

3



Internationalization, specialization

4



Satisfy customers and achieve Goal



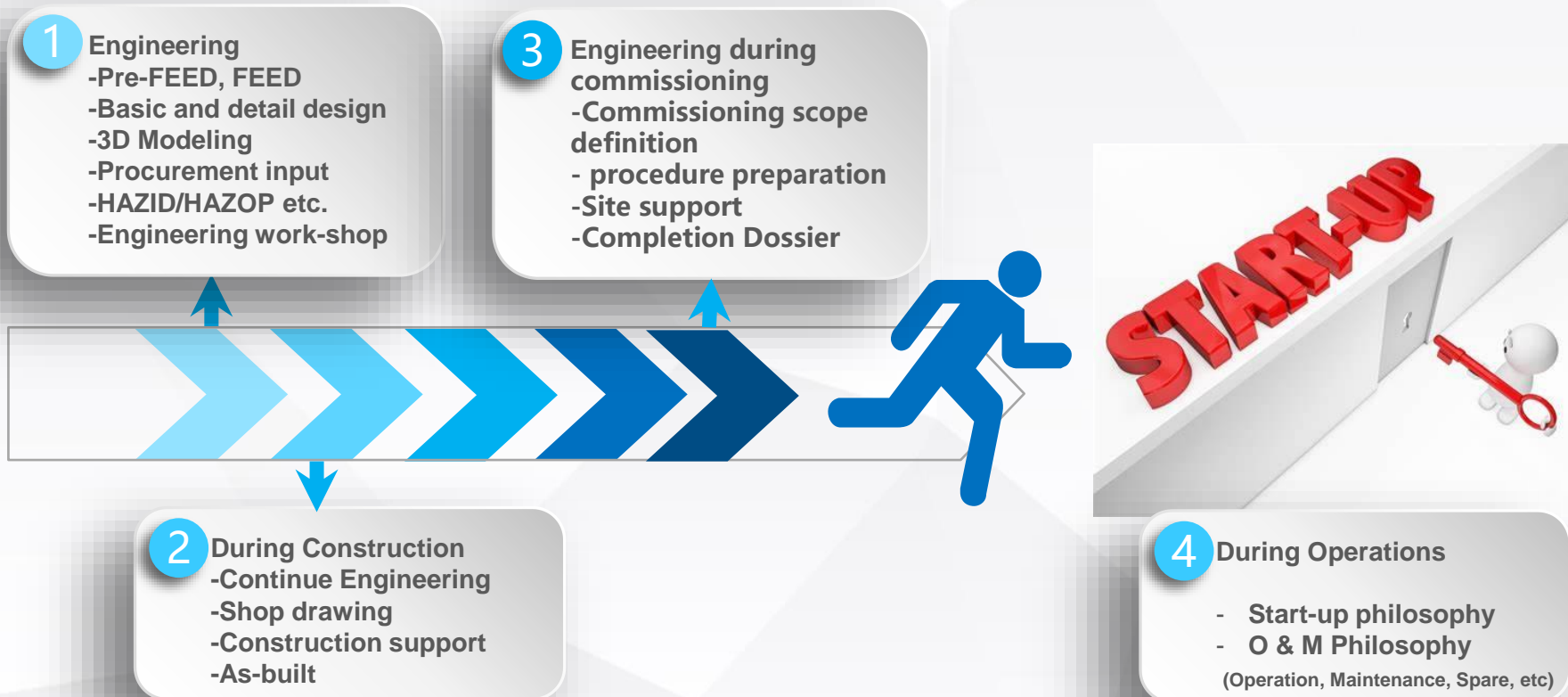
02

Engineering



Engineering Capacity

XinLaisen offers engineering services for a wide range of offshore facilities, including FPSOs (Floating Production, Storage, and Offloading units), FLNG (Floating Liquefied Natural Gas units), FSRUs (Floating Storage and Regasification Units), and various modules.





Software Resources



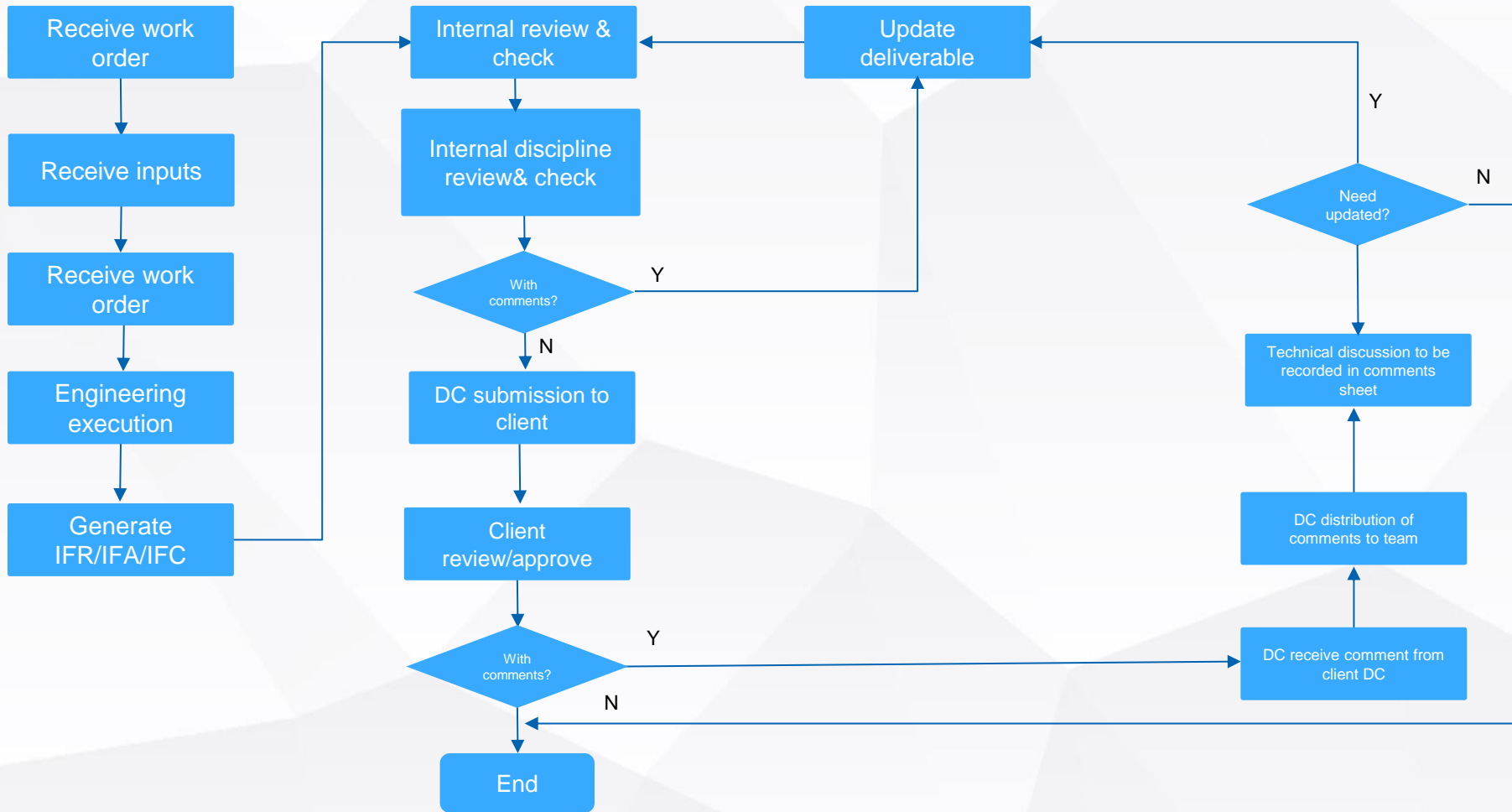
PROCESS HYSYS HTRI	STRESS ANALYSIS CAESAR II ANSYS ABAQUS	PRESSURE VESSEL PV ELITE ANSYS COMPRESS PROSIM
STRUCTURAL TEKLA STAADPRO SACS SESAM	INSTRUMENT INTOOLS (SPI) MATLAB STUDIO 5000	MODELLING & MOORING PDMS / E3D AVEVA MARINE AUTOCAD OPTIMOOR

Engineers	
Process	8
Material	5
Piping	24
Electrical	20
Instrumentation	8
Structure	33
Static Equipment	7
Rotating Equipment	3
HVAC	3
Welding Process	3
Architecture	5
Lifting	1
Load-out	2
Total	122

- Offshore & Module**
- 3D Model design(from P&ID)
 - Piping Stress Analysis
 - Valve Selection
 - Field Assembly
 - Structure Stress Analysis
 - E&I Selection
 - Wiring Diagram
 - Control System Design, PLC & HMI
 - Installation & Function Test



Engineering Design Work-Flow





03

Procurement



Product introduction – Typical Supplier

No.	Maker	Product	Country
1	LS	Cable	Korea
2	OLIVER	DBB Valve	UK
3	Netherlock	Inter Lock System	Korea
4	BERGEN	Pipe Support System	UK
5	LEWA	Process Diaphragm Pumps Chemical Injection Package	Germany
6	PH	Spread Mooring & Offloading	Singapore
7	TRELLEBORG	Offloading Hose System	Sweden
8	Honeywell	Process Control System	USA
9	CHU LIE	FIXED FIRE FIGHTING EQUIPMENT	China
10	YDF	Manual Valve	China
11	COSS/KINO	Water Mist System 、 Deluge Skid、 Foam Systems	UK/China
12	TBM	Material Handling System	China
13	Wepuko	Process Pump Skid	Germany
14	RUHRPUMPEN	Specialized centrifugal pumps	Germany
15	CITECH	Waste Heat Recovery Units	Malaysia
16	Pro-control	HIPPS & Remote Control Valve System	Italy
17	Techfluid	Hose Loading System	UK



Procurement Highlights

Type of Gaskets – Xinlaisen specialized

- Metal gaskets
- Spiral wound gaskets Type: (GRI,GR,RR,RI,RL)
- Flexseals series Type: (FMI 163, FMI 240, FMI 280, FMI 280 Metallic, FMI 330, FMI 550, FMI FGS1, FMI FGS3, FMI FGS4, FMI FGS 1200, FMI Multiflex HPT, FMI Multiflex, FMI Unigraph 500, FMI Unimetal)
- FM-HIGH And Micathem Type:(Mica Micatherm S15, Mica FM High)
- Sichem series Type: (Sichem S11,S33, S50,S59,S60, S66, S91,S92)
- Ring gaskets, Metal ring gasket
- HONGPACK series / PTFE types



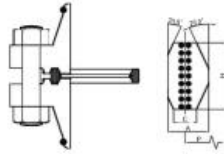


Product introduction (XinLaisen own brand)

Metal ring gasket RX type



Dimensional Data – RX Type



RX type gasket

The RX type RTJ gasket complies with API 6A and ASME B16.20 manufacturing standards and is suitable for API 6B and ASME/ANSI B16.5 flanges.

The RX type is a turbocharged improved version of the standard R-type gasket. The design of the RX type groove is the same as that of the standard R type groove, making the joint interchangeable. The improved design adopts a pressure excitation effect, which improves the sealing efficiency as the internal pressure of the system increases.

Tolerance: (mm)

A * (ring width) nbsp+ 0.20, -0.000 H * (ring height)+ 0.20, -0.000D (outer diameter of ring)+0.5, -0.000 23 * (angle) ± 1/2 °

Ring No.	Pressure ratings API 6B				Ring ID P	Ring OD	Ring width A	Ring height H	Weight lbs.
	720-950 & 2000 (Note 1)	2000 (Note 1)	3000	5000					
RX20	11/2	-	11/2	11/2	68.26	76.20	8.73	19.05	0.527
RX23	2	-	-	-	82.35	93.27	11.91	25.40	1.15
RX24	-	-	2	2	95.25	106.97	11.91	25.40	1.33
RX25	-	-	-	3 1/8	101.60	109.54	8.73	19.05	1.42
RX26	2 1/2	-	-	-	101.60	111.92	11.91	25.40	1.50
RX27	-	-	2 1/2	2 1/2	107.95	118.27	11.91	25.40	1.73
RX31	3	-	3	-	123.83	134.54	11.91	25.40	1.91
RX35	-	-	-	3	136.53	147.24	11.91	25.40	2.60
RX37	4	-	4	-	149.23	155.94	11.91	25.40	2.97
RX39	-	-	-	4	161.93	172.64	11.91	25.40	2.54
RX41	5	-	5	-	180.96	191.69	11.91	25.40	2.72
RX44	-	-	-	5	193.66	204.39	11.91	25.40	2.96
RX45	6	-	6	-	211.14	231.85	11.91	25.40	3.66
RX46	-	-	-	6	211.14	222.25	13.49	38.58	8.56
RX47	-	-	-	8*	228.60	245.27	19.84	41.28	3.79
RX49	8	-	8	-	269.88	280.59	11.91	25.40	5.38
RX50	-	-	-	8	269.88	283.37	16.67	31.75	4.56
RX53	10	-	10	-	323.85	334.57	11.91	25.40	6.45
RX54	-	-	-	10	323.85	337.34	16.67	31.75	5.38
RX57	12	-	12	-	381.00	391.72	11.91	25.40	26.40
RX63	-	-	-	14	419.10	441.72	26.99	59.80	6.63
RX65	16	-	-	-	469.80	480.62	11.91	25.40	9.38
RX66	-	-	16	-	469.80	483.39	16.67	31.75	7.52
RX69	18	-	-	-	533.40	544.12	11.91	25.40	20.14
RX70	-	-	-	18	533.40	550.07	26.99	41.28	11.63
RX73	20	-	-	-	584.20	595.11	11.91	31.75	22.10
RX74	-	-	-	20	584.20	600.87	19.84	41.28	6.790
RX82	-	1	-	-	57.15	67.67	11.91	25.40	0.890
RX84	-	1 1/2	-	-	63.50	74.22	11.91	25.40	0.890
RX85	-	2	-	-	79.38	90.09	13.49	25.40	1.79
RX86	-	2 1/2	-	-	90.49	103.58	15.08	25.58	1.98
RX87	-	3	-	-	100.03	113.13	15.08	28.58	1.22
RX88	-	4	-	-	123.83	139.29	17.46	31.75	2.98
RX89	-	3 1/2	-	-	134.30	129.78	18.26	31.75	6.82
RX90	-	5	-	-	155.58	174.63	19.84	44.45	17.10
RX91	-	10	-	-	262.25	286.94	30.18	45.28	3.31
RX99	-	8(2)	-	8(2)	234.05	245.67	11.91	25.40	-
RX201	-	-	-	13/8	46.94	51.46	5.74	11.30	-
RX205	-	-	-	1 1/2	57.15	62.31	5.56	11.30	-
RX210	-	-	-	20/16	88.90	97.63	9.53	19.05	-
RX215	-	-	-	4 1/2	130.18	140.89	11.91	25.40	-

Metal ring IX type



IX type gasket

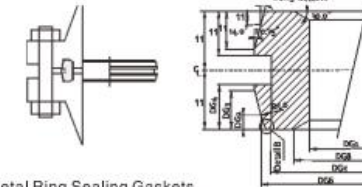
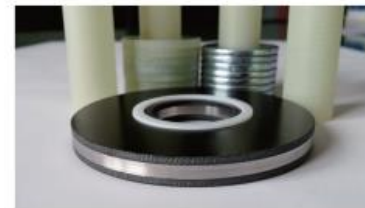


Table B.2-IX Dimensions and Weights of Type IX Metal Ring Sealing Gaskets

Metric System DN	British System NPS	Or size	DG1 mm	DG2 mm	DG3 mm	DG4 mm	DG5 mm	DG6 mm	DG7 mm	DG8 mm	HG1 mm	HG2 mm	HG3 mm	HG4 mm	HG5 mm	RG1 mm	Weight kg
15	1/2	1X15	21.2	27.91	28.46	28.66	27.47	20.14	30.19	24.7	0.35	1.20	3.30	3.8	10.00	0.5	0.03
20	3/4	1X20	27.2	32.93	33.47	33.67	32.48	34.16	35.20	29.7	0.35	1.20	3.30	3.8	10.00	0.5	0.03
25	1	1X25	34.2	39.95	40.49	40.69	39.50	41.18	42.22	36.7	0.35	1.20	3.30	3.8	10.00	0.5	0.03
40	1 1/2	1X40	49.3	55.84	56.38	56.58	55.34	57.11	58.21	51.0	0.35	1.27	3.48	4.0	10.56	0.5	0.05
50	2	1X50	61.3	68.43	69.08	69.32	67.92	69.89	71.13	64.4	0.42	1.41	3.89	4.5	11.78	0.6	0.08
65	2 1/2	1X65	76.4	82.14	82.14	83.03	81.52	83.69	85.05	77.8	0.42	1.56	4.28	4.9	12.98	0.6	0.12
80	3	1X80	89.5	97.74	98.49	98.77	97.89	99.47	100.96	93.3	0.49	1.71	4.70	5.4	14.24	0.7	0.17
100	4	1X100	115.7	125.17	126.04	126.36	124.44	127.15	128.85	120.1	0.56	1.94	5.34	6.2	16.19	0.8	0.28
125	5	1X125	142.6	152.66	153.64	154.00	151.87	154.87	156.78	146.7	0.63	2.15	5.92	6.8	17.94	0.9	0.42
150	6	1X150	179.1	182.17	183.25	183.66	181.32	184.61	186.66	175.4	0.70	2.36	6.48	7.5	19.64	1.0	0.62
200	8	1X200	220.5	233.46	234.66	235.10	232.45	236.19	238.54	226.5	0.77	2.68	7.38	8.5	22.36	1.1	0.99
250	10	1X250	274.9	292.64	294.05	294.57	291.57	295.78	298.42	281.7	0.91	3.02	8.31	9.6	25.20	1.3	1.45
300	12	1X300	325.0	341.13	342.65	343.21	339.97	344.52	347.36	332.5	0.98	3.26	8.96	10.4	27.15	1.4	2.18
350	14	1X350	375.1	373.87	375.36	375.94	372.58	377.34	380.31	365.0	0.98	3.42	9.29	11.0	28.46	1.4	2.40
400	16	1X400	425.3	427.36	428.98	429.58	425.90	431.08	434.27	417.9	0.95	3.66	10.05	11.9	30.47	1.5	3.43
450	18	1X450	475.4	478.50	480.63	481.27	477.45	482.85	486.23	468.6	1.12	3.87	10.65	12.7	32.29	1.6	4.38
500	20	1X500	511.6	511.45	513.29	513.97	509.93	515.63	519.20	501.4	1.19	4.09	11.24	13.5	34.06	1.7	5.27
550	22	1X550	561.7	563.04	564.99	565.73	561.62	567.44	571.10	552.1	1.26	4.28	11.78	14.3	35.69	1.8	6.48
600	24	1X600	611.9	613.64	615.70	616.46	612.40	618.26	622.04	602.8	1.33	4.47	12.29	15.0	37.25	1.9	7.55
650	26	1X650	664.6	666.37	668.42	669.18	665.19	671.09	674.95	655.5	1.33	4.66	12.81	15.7	38.81	1.9	8.74
700	28	1X700	714.1	718.01	720.17	720.97	717.01	722.94	726.16	706.1	1.40	4.83	13.28	16.3	40.25	2.0	10.4
750	30	1X750	766.3	770.65	772.92	773.77	769.83	775.79	780.16	759.8	1.47	5.00	13.76	17.0	41.69	2.1	11.8
800	32	1X800	816.4	821.32	823.70	824.58	820.67	826.66	831.16	810.4	1.54	5.16	14.20	17.6	43.03	2.2	13.3
850	34	1X850	866.6	872.10	874.68	875.60	871.72	877.77	882.93	862.1	1.54	5.32	14.63	18.2	44.34	2.2	14.8
900	36	1X900	918.7	924.78	927.49	928.45	924.68	930.81	936.19	915.4	1.61	5.48	15.06	18.8	45.65	2.3	17.1
950	38	1X950	968.8	975.59	978.40	979.40	975.72	981.92	987.30	966.6	1.61	5.63	15.47	19.3	46.88	2.3	18.9
1000	40	1X1000	1021.0	1028.28	1031.68	1032.85	1029.33	1035.79	1042.21	1021.7	1.68	5.77	15.88	19.9	48.12	2.4	20.9
1050	42	1X1050	1071.1	1100.05	1102.70	1103.71	1100.02	1106.10	1112.26	1096.3	1.75	5.92	16.27	20.4	49.29	2.5	23.0
1100	44	1X1100	1121.3	1150.63	1153.53	1154.54	1150.92	1157.00	1163.28	1136.3	1.75	6.05	16.64	21.0	50.43	2.5	25.1
1150	46	1X1150	1173.4	1203.35	1206.36	1207.42	1203.82	1209.91	1216.31	1189.3	1.82	6.19	17.03	21.5	51.59	2.6	27.5
1200	48	1X1200	1223.6	1254.39	1257.25	1257.25	1254.73	1260.83	1266.35	1239.8	1.82	6.32	17.39	22.0	52.68	2.6	29.9

Insulating gasket set



The flange is the most common fault area that requires appropriate sealing to prevent leakage, and cathodic isolation must also be carried out to prevent stray currents (which can cause metal corrosion and final breakdown). The insulation gasket group helps to solve the sealing problems of most flanges,

type	D-type, E-type, F-type
form	Integrated sleeve and gasket set One integrated isolation sleeve Two 1/8 "steel or stainless steel gaskets Double gasket and full-length sleeve set One - Full length sleeve Two 1/8 "steel or stainless steel gaskets "E" type comprehensive isolation gasket "F" type convex isolation gasket "D" ring connecting gasket O-ring isolation gasket Two 1/8 "isolation gaskets
colour	Silver, white, and black
size	According to requirements



Procurement service

Initial Stage



PPE
Inspection Tools
IT & Network
Office Set up

01

Construction



Bulk and Tagged materials for
all discipline

02

Commissioning



Commissioning Tools/Spares
for all discipline
Lubricants & First fill Oil

03

Delivery



Start-up Consumables
Lifting Gears
Fuel Bunkering
Catering & Provision

04

After Delivery



Spare Parts
Hook-up
Carry over Work
Contingency
Modification

05



Other Procurement Service



specialized centrifugal pumps
mag-driven pumps
recipro cation pumps



Chemical Injection system



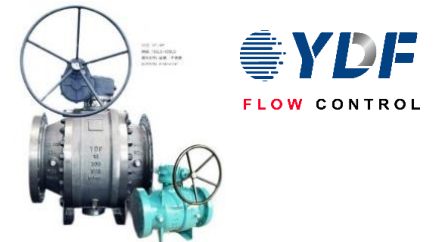
Remote Control Valve
Electric/ Hydraulic Actuator Range



Instrument / Piping valves
DBB Value Solutions



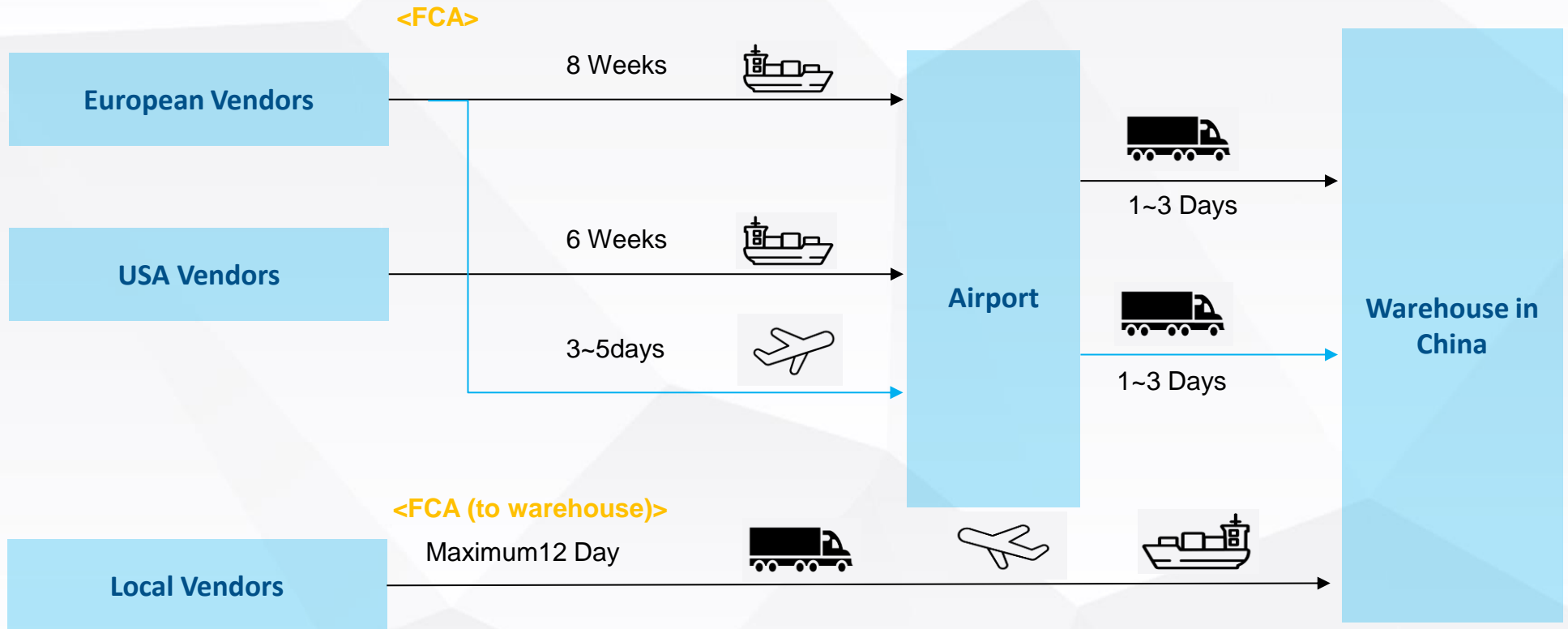
Instrument Tube Fittings



Manual Valve

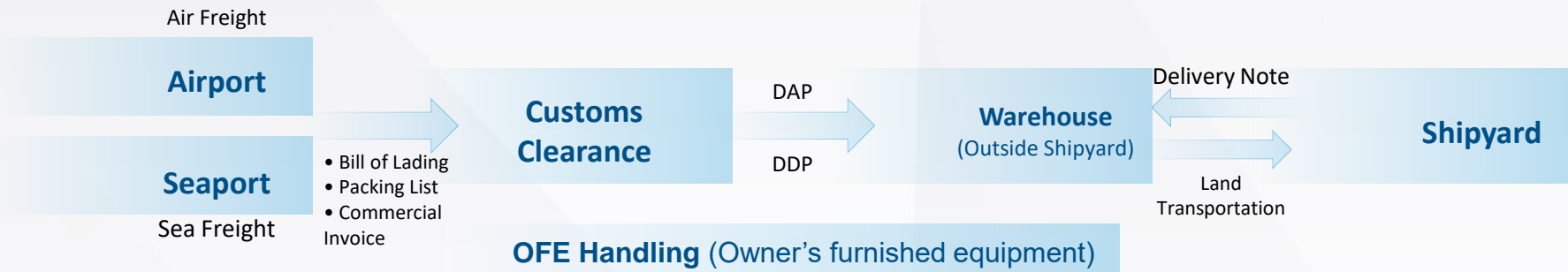


Typical Logistic Workflow





XinLaisen guarantees customer satisfaction by offering comprehensive, one-stop logistics solutions and services tailored to client needs. Leveraging our experience with local authorities, XinLaisen delivers integrated logistics services specifically designed for our clients.



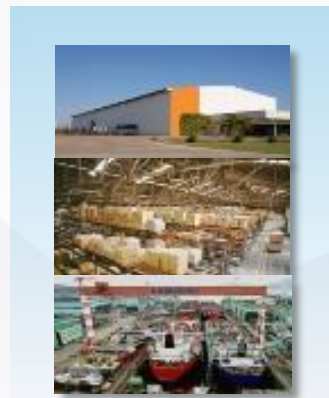
Inbound Shipment



Documentation, Customs Clearance



Transportation



Warehouse



Delivery



Construction



Direct labor resources - Construction

Xinlaisen has 500++ direct QUALIFIED and EXPERIENCED labor for construction. Multiple disciplines and experienced personnel used to work for well-recognized EPC and fabricators, including, labor supply, procurement etc., Fabrication widely through steel structure, piping fabrication and erection, E&I specialized, painting, PFP&CSP, HVAC and insulation.



Discipline	Labor Quantities (pax)	Remarks
Steel structure	186	Welders: 32 pax
Piping	117	Welders:18 pax
E&I	73	Terminators: 24 pax
Painting	56	
PFP&CSP	45	
HVAC	19	
Insulation	61	
Total	557	



Technical Services & Ship Repair



Except all the ports and shipyards in China, we also can provide ship owners with repair services for various ports and shipyards around the world. For example, we often send engineers to ports in the United States and shipyards in Turkey/Portugal/Dubai etc. to provide services to ship owners.



Electrical & Instrumentation

1. High and low voltage power distribution engineering
2. High and low voltage power equipment testing, power equipment preventive model construction and service
3. Installation, commissioning, testing and maintenance of various types of power transformers
4. Complete set of production, installation, testing, debugging and maintenance of high and low voltage cabinets
5. Installation, commissioning and maintenance of emergency diesel and natural gas generator sets
6. Complete set of production, installation and commissioning of frequency conversion control cabinet
7. Installation and commissioning of UPS system and lighting system
8. Installation, adjustment and calibration of pneumatic instruments and electric instruments (such as transmitters, actuators, flow meters, level meters, etc.).
9. Pneumatic control panel cabinet, wellhead control cabinet production and installation
10. Platform telemeter system overhaul
11. Platform air conditioning and cold storage system repair and upgrade.





Industrial Automation Integration

1. DCS/PLC control system

Design, enclosure set, system integration, system application software configuration, man-machine interface establishment, automatic control selection and on-site installation, commissioning, technical support and after-sales service

2. F & G systems

Fire and gas alarm control system (F&G) includes automatic fire detection, manual fire alarm, automatic/manual fire extinguishing, flammable and toxic gases, leakage detection and alarm complete solutions, including fire and gas system cabinet production, system integration; Installation and commissioning of fire and gas systems; Upgrading of old fire and gas systems

3. Video surveillance system

Repair and transformation of platform drilling CCTV system and living CCTV system





Mechanical Automation

1. Various valves associated business

Maintenance of various valves and pump bodies; The complete set, installation, commissioning and maintenance of separators and pressure vessels

2. Metrology system

Selection, design, skidding, installation, calibration and commissioning of crude oil export metering system

3. Hydraulic system

Dismantling, repair and maintenance of platform windlass, cable machines, turntable hydraulic cylinders, and repair of hydraulic motors



company profile



Bridge/Navigation system

1. Autopilot / Track pilot / FU / NFU / Pump control / Driven unit / RAI service
2. Echo sounder / EM log / Doppler log service
3. Gyro compass / Magnetic compass overhaul / repair
4. Radar service
5. GMDSS / Radio equipment inspection & repair
6. Navigation light & Signal light control system service
7. Master clock system service
8. Intercom System PAGA/ Batteryless telephone / Auto telephone / Talk back system service
9. Anemometer service
10. VDR / SVDR repair
11. ECDIS repair
12. All kinds of communication and navigation equipment maintenance /service





IT Services

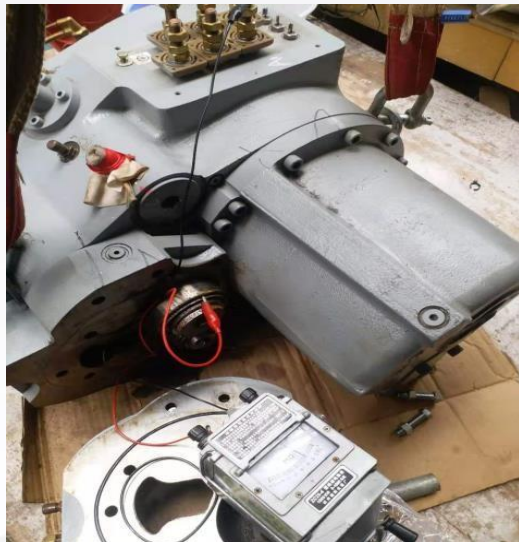
1. PCB (Printed Circuit Board) Repair
2. Hard Disk Data Recording
3. CCTV System Installation and Repair
4. Programming and Software Loading
5. Network Installation and Maintenance
6. Computer Repair Services
7. Alarm Monitoring System Installation and Maintenance
8. Ship-to-Shore Integration Design, Installation, and Maintenance





HVAC Maintenances Work

Our company possesses extensive experience in the renovation and maintenance of air conditioning and cold storage systems. Currently, we work with air conditioner brands such as Carrier Marine Systems, York Marine, and Josun Air Conditioning. Our cold storage brands include Jiangsu Josun, Mitsubishi from Japan, and Danfoss from Denmark. We are committed to offering you a comprehensive and cost-effective solution for upgrading and maintaining your air conditioning and cold storage systems.





Shore-based service support

- Application for import licenses and customs clearance for cargo, covering import and export procedures for land, sea, and air shipments, as well as customs clearance for transshipment of marine equipment.
- Leasing services for hotels, offices, and warehouses.
- Local transportation and vehicle rental services, including leasing of various types of engineering vessels.
- Procurement services for local materials.
- Provision of manpower supply.

company profile





Industrial automation integration engineering performance



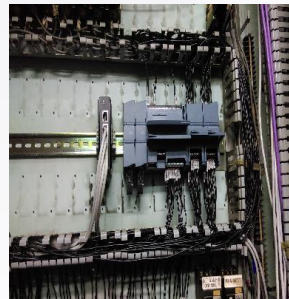
New mounting plates and components
New 3200 Plant Manager



New sync and
car screen



Newly installed
alarm master
control PLC



BH12 platform power station transformation project
Selectively upgrade the electronic control system of 4 main generators

Transform the alarm switching signal, overcurrent, speed, reverse power and other relay modules into WOODWARD EG3200 comprehensive management and PLC control,
Retrofitting an automatic voltage regulator module into BASLER-DECS200 module control,
Newly installed cabin alarm monitoring system Add power limit module and single-control differential protector

HZ26 drilling mud pump and winch electronic control system transformation engineering design

1. Provide drilling mud pump and winch electronic control system upgrade scheme,
2. The relay control part is transformed into PLC control + touch screen, and the PLC model selects AB (ROCKWELL) brand;
3. The original parts and cooling fans on the rectifier bridge are all replaced (Model specifications remain unchanged);
4. DC CONTROL MODEL CONTROL UNIT, THE MAIN CIRCUIT BREAKER DOES NOT CHANGE.
5. The driller console and the local console of the mud pump are replaced with positive pressure explosion-proof control box. In addition, the old electrical components provide a detailed spare parts list, obsolete products, and provide replacement product specifications and models .





Mechanical professional engineering performance



- **NH5 windlass hydraulic motor repair**
Repair of 1 set of hydraulic motor of windlass machine; Replace the internal wiper blades of the hydraulic motor

Install a hydraulic motor to drive the shaft end core



- **NH8 hydraulic motor, hydraulic cylinder and other repair and processing**

Repair of 4 iron driller hydraulic motors; Repair 4 sets of anchor chain machine hydraulic motors; Processing of 3 iron driller torque cylinders; Processing 4 riser chuck liquid cylinders; Machining 2 support ring rotary pin drive cylinder; Processing 4 BOP control system panel valves to drive cylinders; Processing BOP forklift 3 specifications of anti-wear copper blocks; Processing 6 gooseneck pins



Maintenance performance of marine air conditioners and cold storage



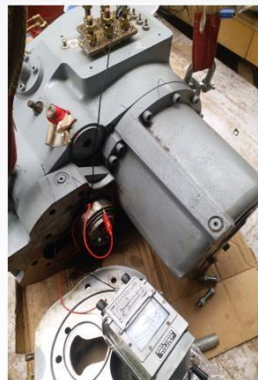
● Repair of refrigeration equipment in Shenzhen area

KT4/NH7/HY942 platform air conditioning system repair

1. Compressor dismantling and overhaul maintenance
2. Pipeline leakage point inspection and repair
3. Debug and maintain thermostats, pressure devices and other related accessories
4. Re-insulate the low-temperature pipeline
5. Maintenance of lubricating oil system

● Endeavour chiller repair (chiller manufacturer: Carrier carrier)

1. Overhaul A1 and A2 compressors
2. Investigate the cause of leakage of the A circuit evaporator, repair the evaporator, and test the pressure of the A and B circuits of the evaporator for 30 bar
3. Clean the refrigerant side of the A circuit condenser and evaporator, all pipe systems and valves of the refrigerant and lubricating oil system
4. Conduct air tightness test on A circuit refrigerant and lubricating oil system
5. Dehumidify the A circuit refrigerant and lubricating oil system, purge nitrogen, and vacuum A and B circuits
6. Replace the A-circuit lubricating oil coarse and fine filter element and dryer
7. Fill the A and B circuits with refrigerant, and fill the A circuit with lubricating oil to test the unit and restore the operation of the unit.





Commissioning



Direct labor resources - Commissioning

XinLaisen focuses its capabilities from mechanical completion of sub-systems-precom-commissioning plus including but not limited on the following services:

1. Project Control database System: PCMC Pro
2. Commissioning procedure preparation by system
3. Each discipline commissioning activities including GALT/MOP, instrument calibration, loop test, control system logic test and Mechanical Running Test.
4. Vendor services such as Honeywell, Siemens, ABB, Triconex, AB, YOKOGAWA.
5. Equipment supply for commissioning activities including MV/HV testing, load bank, hot oil flushing and chemical cleaning, compressor.
6. Material provision for commissioning: Transformer oil; Lube oil; Fuel gas; Nitrogen; VPCI.

Discipline	Labor Quantities (pax)
Mechanical	20
Electrical	50
Instrument	50
Telecom	16
Total	136



Track records- Commissioning

Sn	Descriptions	Year	Client
01.	Loop checks, hot oil flushing, GALT/MOP	2022	Bomesc Yard ALNG2 Modules
02.	Loop checks, HVAC leak test, & function test,	2023	JGC, Taichung, Taiwan LNG terminal
03.	Flange Management / GALT/ MOP	2023	Modec, Sangomar FPSO
04.	Manpower supply for FPSO commissioning (Owner-direct)	2024	Yinson, MARIA QUITERIA FPSO
05.	Sub-station loop checks, compressor cranking, EHT function test, GALT/MOP	2024	Wisou power station modules





Operations & Maintenance



Direct labor resources – O & M

XLS, we focusing on the following offshore services:

1. Well Control & Automation Power
2. Plant Emergency Repairs (24/7 Dispatch)
3. Drilling Equipment & Well Maintenance
4. Metering, HP Flare, and Auxiliary Systems
5. Pipeline Flushing & Safety Valve Repair
6. SCADA & Automation System Integration
7. I&E Services:
 - Commissioning & Start-up
 - Control System Programming & Troubleshooting
 - Pneumatic/Hydraulic Repairs
 - LACT, Metering, and Monitoring Systems
 - Predictive Maintenance for Power Systems
8. Regulatory & Compliance Support
 - (Standards: BSEE, IMCA, API, IECEx, NFPA 70E, IMO, OSHA)

Descriptions	Pax
OIM	3
Production Operator	26
Mechanical/Maintenance	49
Offshore Superintendent	21
E&I Technician	30
Rigger/Foreman	34
HSE	5

168



Fabrication Yards



YARD LAYOUT
工厂布局



- | | |
|---|--|
| 01. 1号船坞
NO.1 Dock | 02. 2号船坞
NO.2 Dock |
| 03. 1号码头
NO.1 Berth | 04. 2号码头
NO.2 Berth |
| 05. 3号码头
NO.3 Berth | 06. 4号码头
NO.4 Berth |
| 07. 办公大楼
Office Building | 08. 船东大楼
Shipowner Office |
| 09. 甲钳车间
Deck Machinery Workshop | 10. 金工车间
Machining Workshop |
| 11. 甲钳车间
Deck Machinery Workshop | 12. 生产楼&仓库
Production Building & Warehouse |
| 13. 管系车间
Piping Workshop | 14. 船体车间
Hull Workshop |
| 15. 船体车间
Hull Workshop | 16. 设备车间
Equipment Maintenance Workshop |
| 17. 油漆仓库
Paint Warehouse | 18. 空压机站
Air Compressor Station |
| 19. 化清车间
Chemical Cleaning Workshop | 20. 焊材仓库
Welding Material Warehouse |
| 21. 废砂仓库
Waste Grit Warehouse | 22. 职工食堂
Staff Dining Hall |
| 23. 管系车间
Piping Workshop | 24. 轮钳车间
Engine Machinery Workshop |
| 25. 船电车间
Electrical Workshop | 26. 无尘车间
Dust free workshop |
| 27. 职工之家
Staff Apartments | |



DRY DOCK
我们的船坞

1号船坞 NO.1 DOCK

Panamax dry dock: 235M x 40M x 11M
1. Equipped with a 50T x 75M tower crane
2. The maximum docking draft is 6.5M
3. The drainage time in the dock is about 3 hours

2号船坞 NO.2 DOCK

Cape Size Dry Dock: 310M x 55M x 13M
1. Equipped with 50T x 70M tower crane x 1 set
2. Equipped with 60T x 60M tower crane x 1 set
3. The maximum docking draft is 8.5M
4. The drainage time in the dock is about 3 hours

REPAIR BERTH 我们的码头

1号码头 NO.1 REPAIR BERTH

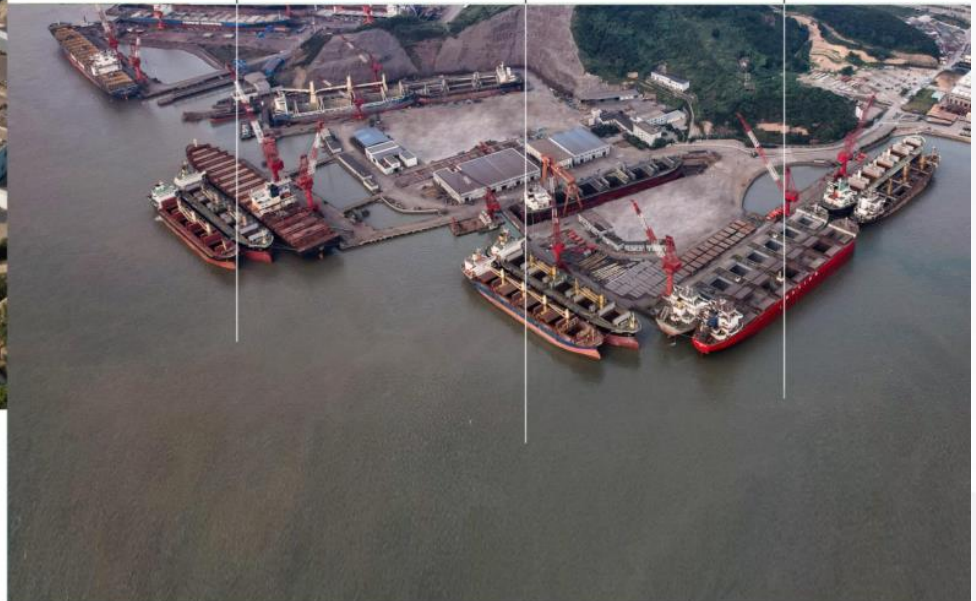
15万吨级船坞码头260M配岸吊 50TX98M X 2台
260M in length, equipped shore crane SWL50T x 98M x 2sets

2号码头 NO.2 REPAIR BERTH

10万吨级船坞码头220M配岸吊50TX90M X1台
220M in length, equipped one set shore crane SWL 50T 90M X1 set

3/4号码头 NO.3/4 REPAIR BERTH

20万吨船坞码头400M.配岸吊50TX98MX1台、
50T X 90MX1台、50TX70M X1台
200,000 tons outfitting wharf 400M,
Equipped with Shore Crane 50Tx98Mx1set, 50Tx90M x 1set, 50Tx70M x1set







船坞 DRYDOCKS				
船坞 Dry Dock	尺度 L x B x D(M)	载重吨 DWT	吊车 Crane	岸电 Electric Power
No.1	355 x 78 x 14	300,000	80T/50M x 1 Set 80T/60M x 1 Set	440V/380V
No.2	325 x 54 x 13	200,000	40T/40M x 1 Set 80T/60M x 1 Set	



① 3# MAIN GATE

② 5# MAIN GATE

③ OFFICE BUILDING

④ 1# DRY DOCK (DWT:300,000T ,L*B:380*105)

⑤ 2# DRY DOCK (DWT:60,000T ,L*B:380*40)

⑥ FLOATING DOCK(DWT:30,000T ,L*B:236*47)

⑦ 1# WHARFAGE (L:1250m, LC:50T)

⑧ 2# WHARFAGE (L:600m, LC:50T)

⑨ MACHINERY WORKSHOP

⑩ PAINTING WORKSHOP

⑪ BLASTING WORKSHOP

⑫ HULL WORKSHOP

① MAIN GATE

② MAIN OFFICE BUILDING

③ HULL WORKSHOP

④ MACHINERY & PIPING WORKSHOP

⑤ BLASTING & PAINTING SHOP

⑥ NO.1 DRY DOCK(L*B:285*30,DWT:30,000)

⑦ NO.2 DRY DOCK(L*B:325*39,DWT:80,000)

⑧ NO.3 DRY DOCK(L*B:340*42,DWT:100,000)

⑨ NO.1 WHARFAGE(L:280m,LC:30T)

⑩ NO.2 WHARFAGE(L:281m,LC:30T)

⑪ NO.3 WHARFAGE(L:301m,LC:30T,50T)

⑫ NO.4 WHARFAGE(L:600m,LC:40T)



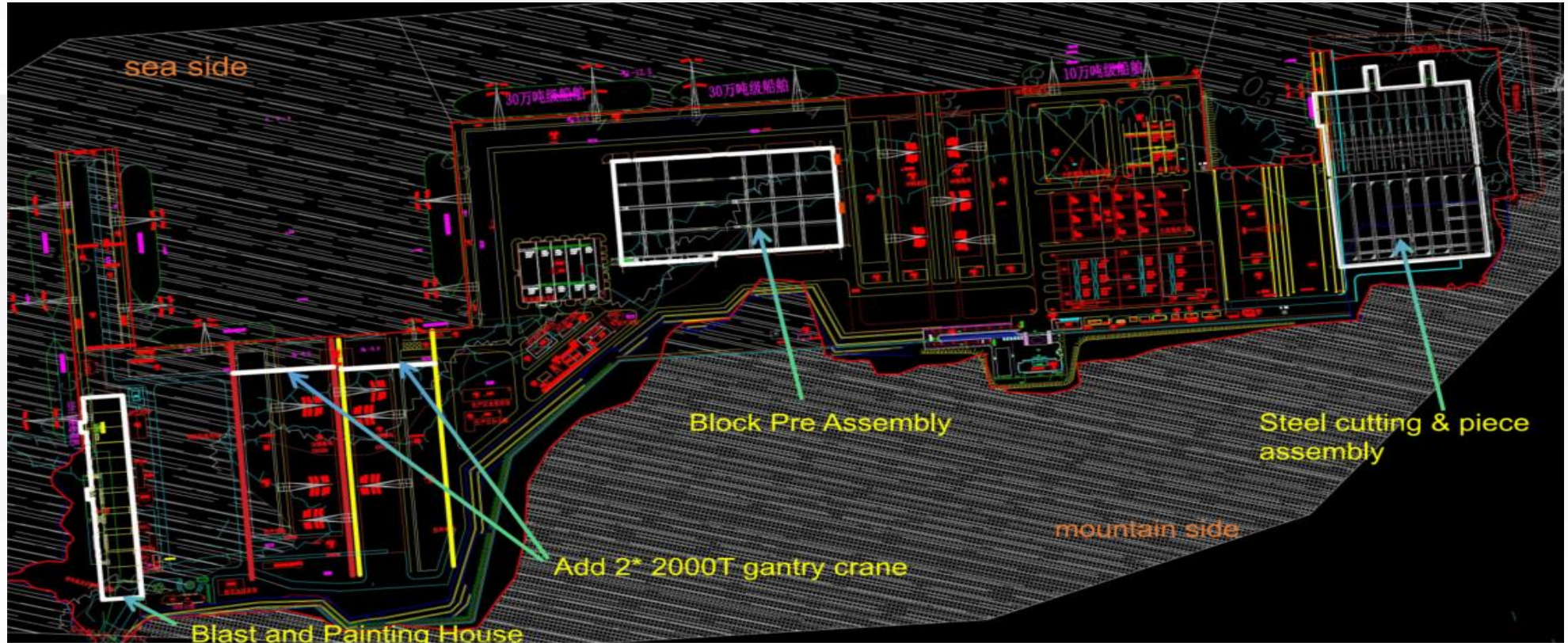
- ① MAIN GATE
- ② OFFICE BUILDING
- ③ 1# WHARFAGE (L:640m,LC:50T)
- ④ 1# DRY DOCK(L*B:380*80,DWT:300,000T)
- ⑤ 2# DRY DOCK(L*B:380*68,DWT:300,000T)
- ⑥ HULL WORKSHOP

- ⑦ MACHINERY WORKSHOP
- ⑧ BLASTING & PAINTING WORKSHOP

- ① NO.1 WHARFAGE(L:650m,LC:50T)
- ② NO.2 DRY DOCK(L*B:400*80,DWT:300,000)
- ③ NO.2 WHARFAGE(L:562m,LC:50T)
- ④ NO.3 DRY DOCK(L*B:240*40,DWT:50,000)
- ⑤ NO.4 DRY DOCK (L*B:310*54,DWT:150,000)
- ⑥ NO.3 WHARFAGE(L:258m,LC:50T)
- ⑦ NO.4 WHARFAGE(L:796m,LC:45T,50T)



- Note: 1, Current status of the Shipyard
2, Dock #1 size 380 L * 80 B; Dock #2 size 420 L * 68 B
3, Dock #3&4 Approved but not constructed, planned size 280 L * 46 B each
4, Total yard area is 1.3 mil m² with Water Depth at 12 m



Note:

- Steel cutting & piece assembly and Pre-assembly workshops are same as Rongshen Yard.
- Blast and painting workshops are 4 blast workshops and 8 painting workshops.
- New 2 set of 2000T gantry cranes to be added.




THANKS

谢谢观看

Looking forward to provide you with the best efficient service,
Best regards,
Gabriel Edwards
Chairman, *Masons Energies Singapore, Hongkong and Xinlaisen*
Shanghai, China

 gabriel@masonsenergies.com / gabriel@xinlaisen.com

 +86 187 2132 8197 (24/7)